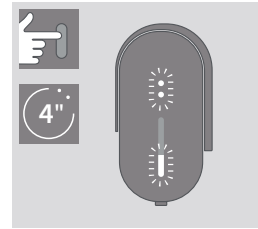
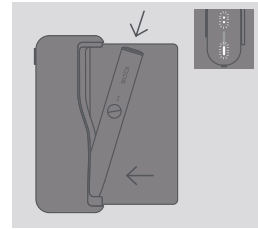


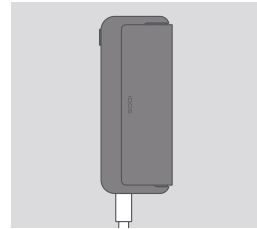
Getting Started



TURN ON
Press and hold Pocket Charger Button for 4 seconds, then release; Pocket Charger Status Lights and Holder Status Lights will turn on slowly.

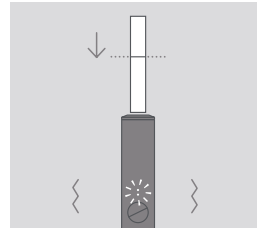


CHARGE HOLDER
Insert Holder into the Pocket Charger, then close Wrap to charge. Holder Status Light will show Holder battery level.

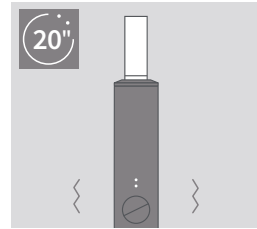


CHARGE POCKET CHARGER
Before first use, fully charge your device with Power Adaptor and Charging Cable. (approx. 135 min)

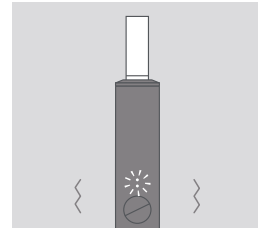
How to use your IQOS ILUMA PRIME™



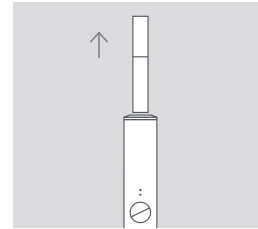
1. INSERT SPECIFICALLY DESIGNED TOBACCO STICK
Insert the specifically designed tobacco stick to the line on filter until Holder vibrates and Light(s) pulse(s). Heating starts automatically, or by pressing Button for 1 second.



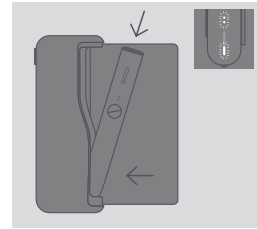
2. BEGIN USE
Start using once Holder vibrates and Lights stay fixed.



3. NEARLY COMPLETE
To signal the last 30 seconds or last 2 puffs, Holder will vibrate with Light(s) pulsing white.



4. REMOVE SPECIFICALLY DESIGNED TOBACCO STICK
Remove used specifically designed tobacco stick and dispose as per Safety Warnings and Instructions.

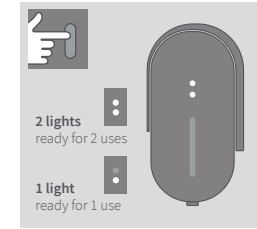


5. RECHARGE HOLDER
Insert the Holder in the Charger for recharging.

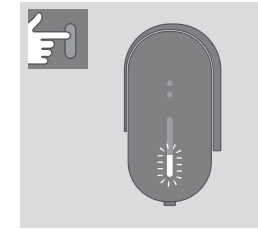
Quick Tips



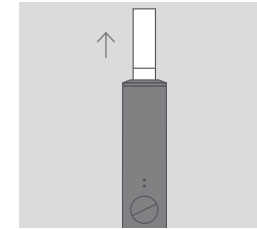
CHECK HOLDER STATUS
Tilt Holder towards you or short press Button, Holder Lights indicate Holder battery level.



CHECK HOLDER STATUS ON THE POCKET CHARGER
Short press Pocket Charger Button. Holder Status Light will turn on.

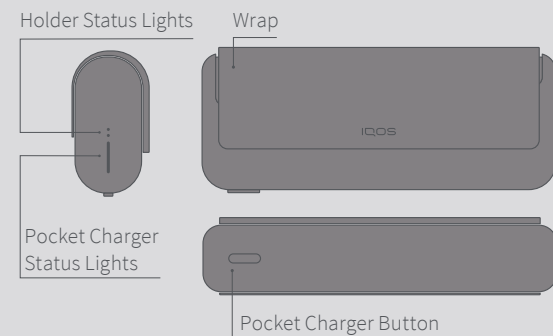


CHECK POCKET CHARGER STATUS
Short press Pocket Charger Button. Pocket Charger Status Lights will turn on to indicate battery level.

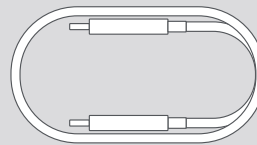
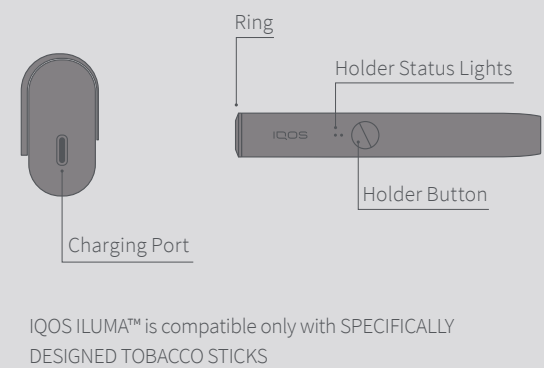


AUTOSTOP
During use, the experience will stop if the specifically designed tobacco stick is moved, or removed from the Holder.

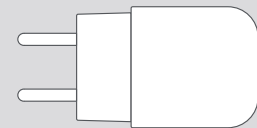
IQOS ILUMA PRIME™ POCKET CHARGER



IQOS ILUMA™ HOLDER



Charging Cable



Power Adaptor



For the **full user guide**, **Customer Care** and **Extended support services for IQOS users**, visit

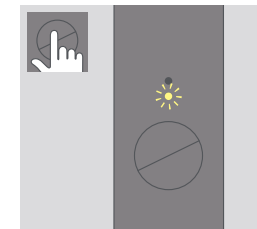
www.iqos.com/myiqos

FEATURES AND SETTINGS

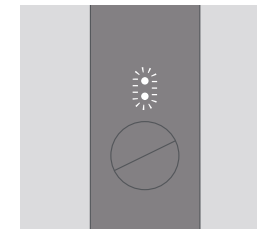
Can be turned on or off with the IQOS app*.

Please register by scanning QR code or log in on www.iqos.com/iluma and follow the instructions.

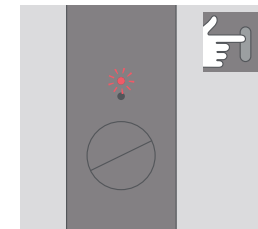
* IQOS app may not be available in your country.



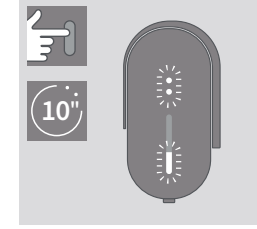
LIGHT BLINKS YELLOW
Battery depleted, need to charge.



LIGHTS BLINK WHITE TWICE
IQOS ILUMA PRIME™ is outside operating temperature range (0°C~40°C).

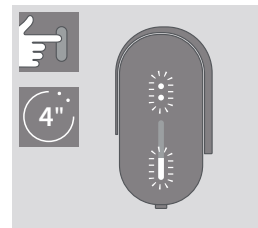


LIGHT BLINKS RED
Reset Pocket Charger. If red light blinking persists, contact Customer Care.

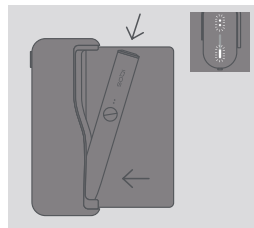


TO RESET
Place Holder in Pocket Charger and press Button for 10 seconds then release. All Status Lights will turn OFF, and turn ON, to confirm a RESET.

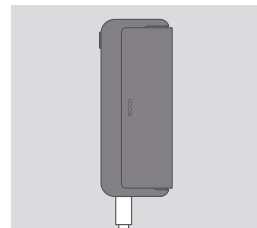
So starten Sie



EINSCHALTEN
Halten Sie die Power-Taste am Pocket Charger 4 Sekunden lang gedrückt und lassen Sie sie dann los. Die Ladestatus-LEDs für Pocket Charger und Holder leuchten langsam auf.

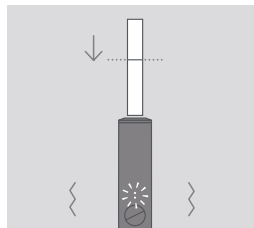


HOLDER LADEN
Setzen Sie den Holder in den Pocket Charger ein und schließen Sie das Wrap. Die Holder Ladestatus-LEDs am Pocket Charger zeigen den Ladefortschritt an.

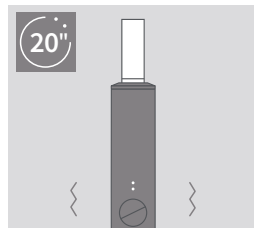


POCKET CHARGER LADEN
Laden Sie Ihr IQOS ILUMA™ vor der ersten Verwendung mit dem USB-Netzteil und -Ladekabel auf. (Dauer: ca. 135 Min.)

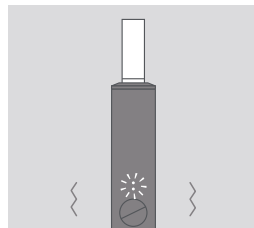
So benutzen Sie Ihr IQOS ILUMA PRIME™



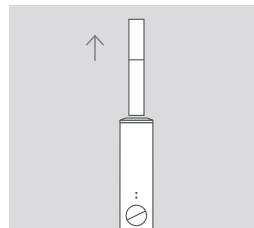
1. SPEZIELL ENTWICKELTEN TABAKSTICK EINSETZEN
Setzen Sie den speziell entwickelten Tabakstick bis zur Linie am Filter ein, bis der Holder vibriert und die LEDs pulsieren. Die Erhitzung startet automatisch. Alternativ können Sie die Holder Power-Taste 1 Sekunde lang gedrückt halten.



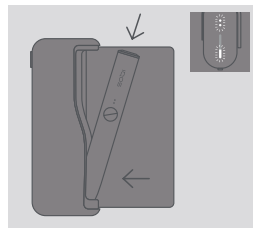
2. VERWENDUNG STARTEN
Sie können Ihr IQOS ILUMA™ verwenden, sobald der Holder erneut vibriert und die LEDs nicht mehr blinken.



3. ENDE DER TABAKERHITZUNG
Um die letzten 30 Sekunden der Nutzungsdauer oder die letzten beiden Züge zu signalisieren, vibriert der Holder und die LEDs pulsieren erneut weiß.



4. SPEZIELL ENTWICKELTEN TABAKSTICK ENTFERNEN
Entfernen Sie den speziell entwickelten Tabakstick und entsorgen Sie ihn wie in den Sicherheits- und Warnhinweisen angegeben.



5. HOLDER NEU LADEN
Setzen Sie den Holder in den Pocket Charger ein, um ihn erneut zu laden.

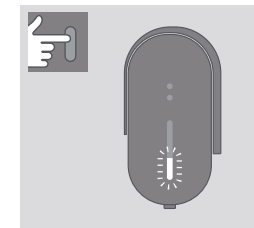
Nützliche Hinweise



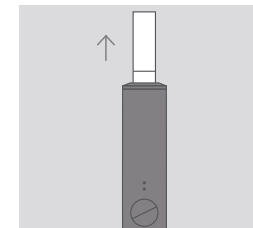
ÜBERPRÜFEN DES HOLDER LADESTATUS
Neigen Sie den Holder in Ihre Richtung oder drücken Sie kurz die Holder Power-Taste, damit die LEDs den Ladestatus des Holders anzeigen.



ÜBERPRÜFEN DES HOLDER LADESTATUS AM POCKET CHARGER
Drücken Sie kurz die Power-Taste am Pocket Charger. Die Holder Ladestatus-LEDs am Pocket Charger leuchten auf.

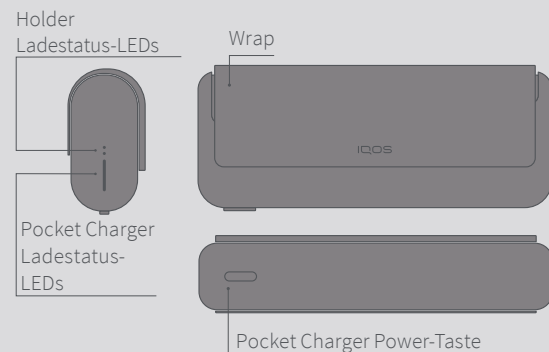


ÜBERPRÜFEN DES POCKET CHARGER LADESTATUS
Drücken Sie kurz die Power-Taste am Pocket Charger. Die nun aufleuchtenden LEDs zeigen den Ladestatus an.

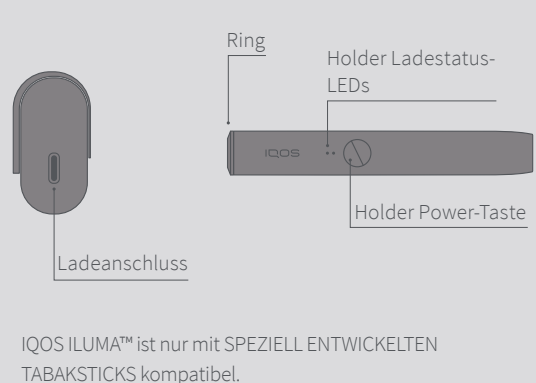


AUTOSTOPP
Ihr IQOS ILUMA™ schaltet sich automatisch aus, falls der speziell entwickelte Tabakstick während der Nutzung im Holder bewegt oder vollständig entfernt wird.

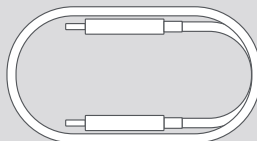
IQOS ILUMA PRIME™ POCKET CHARGER



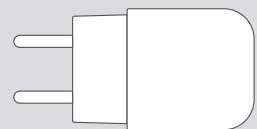
IQOS ILUMA™ HOLDER



IQOS ILUMA™ ist nur mit SPEZIELL ENTWICKELTEN TABAKSTICKS kompatibel.



USB-Ladekabel



USB-Netzteil



Die **vollständige Bedienungsanleitung** und **Informationen zu IQOS CARE** finden Sie auf

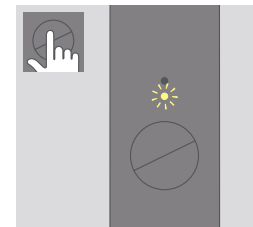
www.iqos.com/myiqos

FUNKTIONEN UND EINSTELLUNGEN

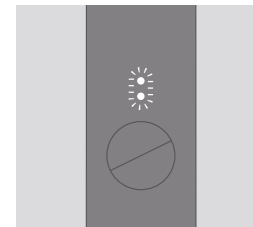
können mit der IQOS app* ein- und ausgeschaltet werden.

Registrieren Sie sich bitte, indem Sie den QR-Code scannen oder melden Sie sich auf www.iqos.com/iluma an und folgen Sie den Anweisungen.

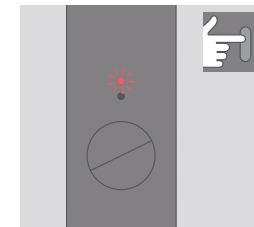
* Möglicherweise ist die IQOS app nicht in Ihrem Land verfügbar.



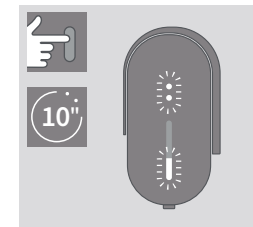
LED BLINKT GELB
Der Akku des Holders ist leer. Bitte laden Sie ihn auf, um den Holder erneut nutzen zu können.



LEDS BLINKEN ZWEI MAL WEISS
Ihr IQOS ILUMA PRIME™ befindet sich außerhalb des empfohlenen Temperaturbereichs (<0 °C / >40 °C).

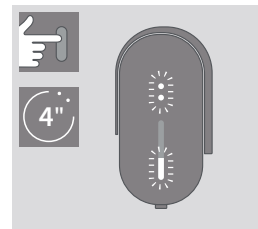


LED BLINKT ROT
Setzen Sie den Pocket Charger zurück. Wenn die LED nicht aufhört, rot zu blinken, wenden Sie sich an IQOS CARE.

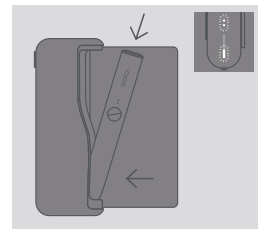


ZURÜCKSETZEN
Setzen Sie den Holder in den Pocket Charger ein, halten Sie die Power-Taste 10 Sekunden lang gedrückt und lassen Sie sie dann los. Alle Ladestatus-LEDs gehen aus und wieder an, um zu bestätigen, dass das System zurückgesetzt wurde.

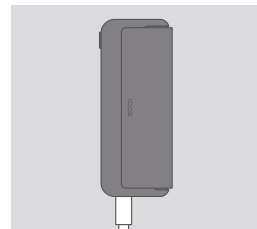
Pour commencer



ALLUMEZ
Appuyez sur le bouton du Chargeur de Poche pendant quatre secondes, puis relâchez ; Les voyants d'état du Chargeur de Poche et du Stylet s'allument progressivement.

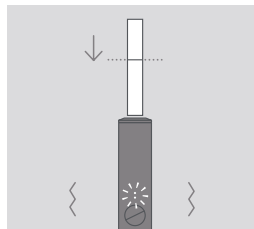


CHARGEZ LE STYLET
Insérez le Stylet dans le Chargeur de Poche, puis fermez le rabat pour charger.
Le voyant d'état du Stylet indique le niveau de charge de l'appareil.

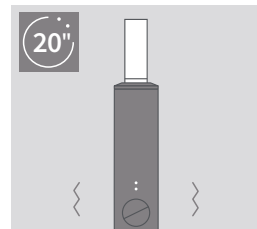


CHARGEZ LE CHARGEUR DE POCHE
Avant sa première utilisation, chargez complètement votre appareil avec l'adaptateur secteur et le câble de chargement.
(environ 135 min)

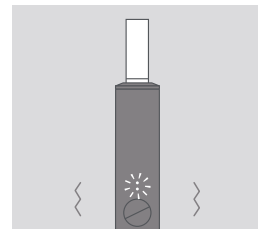
Comment utiliser votre IQOS ILUMA PRIME™



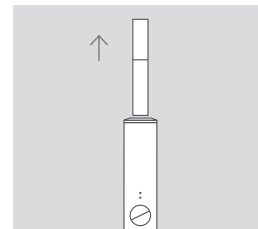
1. INSÉREZ LA RECHARGE DE TABAC CONÇUE SPÉCIFIQUEMENT
Insérez la recharge de tabac conçue spécifiquement dans le Stylet jusqu'à la ligne du filtre. Le Stylet vibre et le(s) voyant(s) clignote(nt).
Le Stylet commence à chauffer automatiquement. Sinon appuyez sur le bouton pendant une seconde.



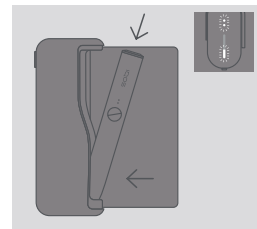
2. COMMENCEZ L'UTILISATION
Commencez l'utilisation une fois que le Stylet vibre et que les voyants restent fixes.



3. FIN IMMINENTE
Le Stylet vibre à nouveau et le(s) voyant(s) clignote(nt) en blanc pour signaler les 30 dernières secondes d'utilisation.



4. RETIREZ LA RECHARGE DE TABAC CONÇUE SPÉCIFIQUEMENT
Retirez la recharge de tabac conçue spécifiquement usagée et jetez-la conformément aux instructions et avertissements de sécurité.



5. RECHARGEZ LE STYLET
Insérez le Stylet dans le Chargeur de Poche pour le recharger.

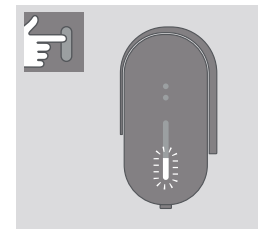
Astuces rapides



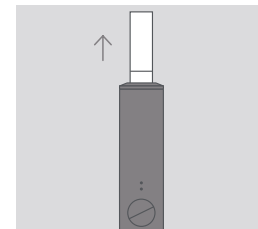
POUR VÉRIFIER LE NIVEAU DE CHARGE DU STYLET
Inclinez le Stylet vers vous ou appuyez brièvement sur le bouton : le(s) voyant(s) du Stylet indique(nt) son niveau de charge.



POUR VÉRIFIER LE NIVEAU DE CHARGE SUR LE CHARGEUR DE POCHE
Appuyez brièvement sur le bouton du Chargeur de Poche. Le(s) voyant(s) d'état du Stylet s'allume(nt).



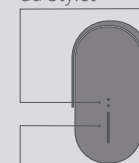
POUR VÉRIFIER LE NIVEAU DE CHARGE DU CHARGEUR DE POCHE
Appuyez brièvement sur le bouton du Chargeur de Poche. Les voyants d'état du Chargeur de Poche s'allument pour indiquer son niveau de charge.



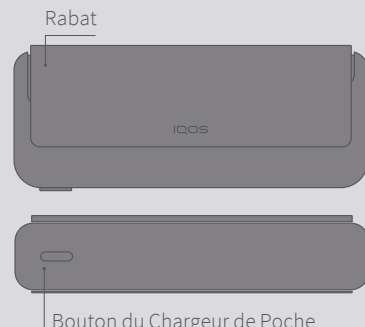
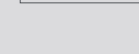
AUTO-STOP
L'utilisation s'arrête automatiquement si la recharge de tabac conçue spécifiquement est déplacée ou retirée du Stylet.

CHARGEUR DE POCHE IQOS ILUMA PRIME™

Voyants d'état du Stylet



Voyants d'état du Chargeur de Poche



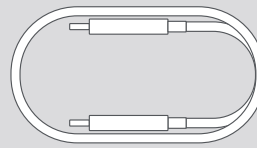
IQOS ILUMA s'utilise uniquement avec des RECHARGES DE TABAC CONÇUES SPÉCIFIQUEMENT

STYLET IQOS ILUMA™

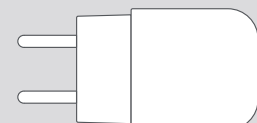
Anneau

Voyants d'état du Stylet

Bouton du Stylet



Câble de chargement



Adaptateur secteur



Pour **consulter le mode d'emploi complet, accéder au Service client et à l'assistance étendue pour les utilisateurs IQOS, rendez-vous** sur

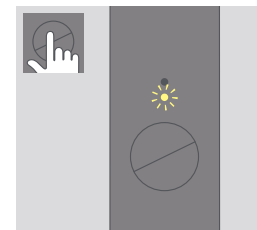
www.iqos.com/myiqos

CARACTÉRISTIQUES ET RÉGLAGES

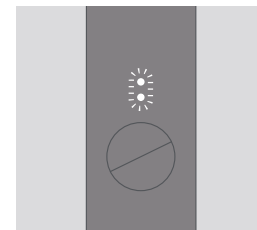
Peuvent être activés ou désactivés avec l'appli IQOS*.

Enregistrez-vous en scannant le QR code ou en vous connectant sur www.iqos.com/iluma puis suivez les instructions.

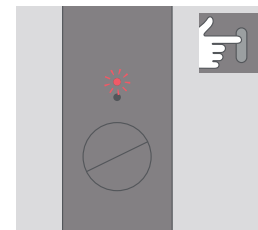
* L'appli IQOS n'est peut-être pas disponible dans votre pays.



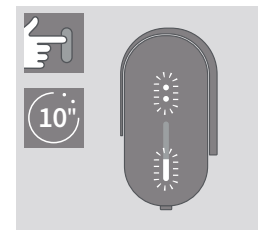
LE VOYANT CLIGNOTE EN JAUNE
Batterie vide, nécessité de la charger.



LES VOYANTS CLIGNOTENT EN BLANC DEUX FOIS
L'IQOS ILUMA PRIME™ est en dehors de sa fourchette thermique de fonctionnement (0 °C ~ 40 °C).

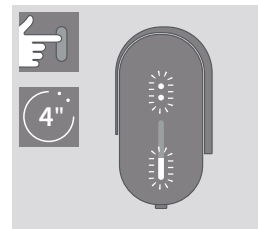


LE VOYANT CLIGNOTE EN ROUGE
Réinitialisez le Chargeur de Poche. Si le voyant rouge continue de clignoter, contactez le Service client.



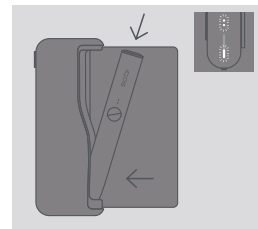
POUR RÉINITIALISER
Placez le Stylet dans le Chargeur de Poche et appuyez sur le bouton pendant 10 secondes avant de le relâcher. Tous les voyants s'éteignent, puis se rallument pour confirmer la réinitialisation.

Per cominciare



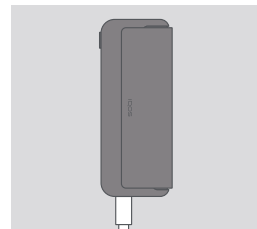
ACCENSIONE

Tenere premuto il pulsante del Caricatore Tascabile per 4 secondi e rilasciarlo. Le luci indicanti lo stato del Caricatore Tascabile e dell'Holder si accenderanno lentamente.



CARICAMENTO DELL'HOLDER

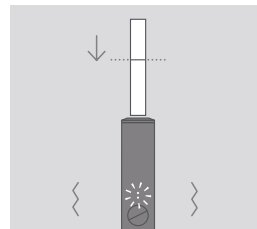
Inserire l'Holder nel Caricatore Tascabile, quindi chiudere l'involucro per caricare. La luce di stato dell'Holder mostrerà il livello della batteria.



CARICAMENTO DEL CARICATORE TASCABILE

Prima del primo utilizzo, caricare completamente il dispositivo con l'Adattatore di Alimentazione e il Cavo per la Ricarica. (circa 135 min.)

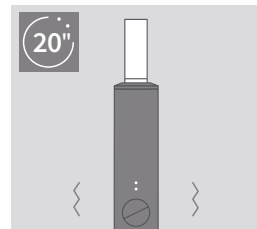
Come usare il tuo IQOS ILUMA PRIME™



1. INSERIRE LO STICK DI TABACCO APPOSITAMENTE PROGETTATO

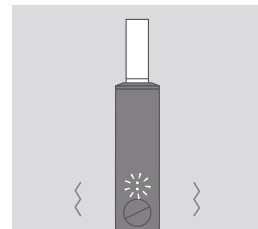
Inserire lo stick di tabacco appositamente progettato fino alla linea stampata presente sul filtro finché l'Holder vibrerà e le luci lampeggeranno.

Il riscaldamento inizierà in automatico o premendo il pulsante per 1 secondo.



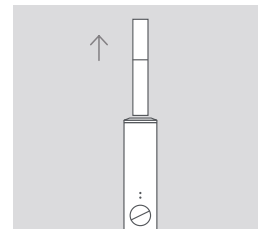
2. PRONTO ALL'USO

Iniziare l'utilizzo quando l'Holder vibra e le luci restano accese.



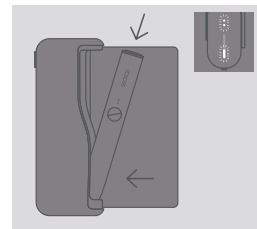
3. QUASI FINITO

Per segnalare che rimangono 30 secondi o solo 2 tiri, le luci bianche dell'Holder lampeggeranno e vi sarà una vibrazione.



4. RIMUOVERE LO STICK DI TABACCO APPOSITAMENTE PROGETTATO

Rimuovere lo stick di tabacco appositamente progettato usato e smaltirlo secondo quanto indicato nelle Istruzioni e negli Avvisi di Sicurezza.



5. CARICAMENTO DELL'HOLDER

Inserire l'Holder nel Caricatore Tascabile per ricaricare.

Consigli pratici



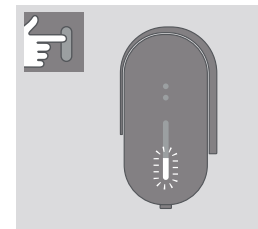
CONTROLLO DELLO STATO DELL'HOLDER

Inclinare l'Holder verso di sé o premere brevemente il pulsante. Le luci dell'Holder indicheranno il livello della batteria.



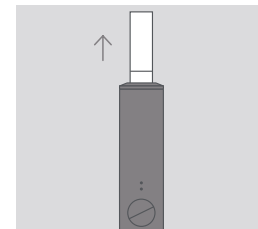
CONTROLLO DELLO STATO DELL'HOLDER DAL CARICATORE TASCABILE

Premere e rilasciare il pulsante del Caricatore Tascabile. La luce di stato dell'Holder si accenderà.



CONTROLLO DELLO STATO DEL CARICATORE TASCABILE

Premere e rilasciare il pulsante del Caricatore Tascabile. Le luci indicanti lo stato del Caricatore Tascabile si accenderanno per indicare il livello della batteria.

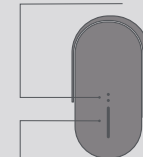


INTERRUZIONE AUTOMATICA

Durante l'uso, il dispositivo si interromperà se lo stick di tabacco appositamente progettato viene mosso o tolto dall'Holder.

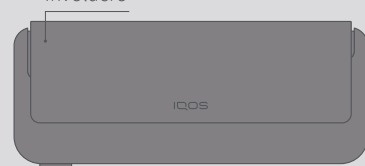
CARICATORE TASCABILE IQOS ILUMA PRIME™

Luci di stato dell'Holder



Luci di stato del Caricatore Tascabile

Involucro



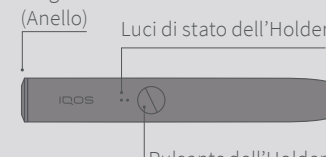
Pulsante del Caricatore Tascabile



Porta di ricarica

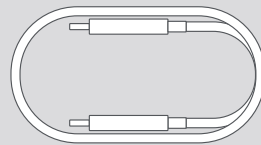
HOLDER IQOS ILUMA™

Ring (Anello)

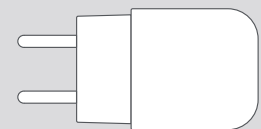


Luci di stato dell'Holder

Pulsante dell'Holder



Cavo per la Ricarica



Adattatore di Alimentazione

IQOS ILUMA™ è compatibile solo con gli STICK DI TABACCO APPOSITAMENTE PROGETTATI



Per la **Guida utente completa**, per il **Servizio Clienti** e per **servizi di assistenza estesi per gli utenti IQOS**, visita

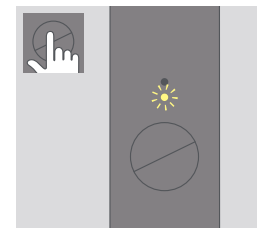
www.iqos.com/myiqos

LE CARATTERISTICHE E IMPOSTAZIONI

possono essere cambiate tramite l'IQOS app*.

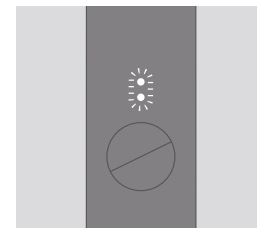
Per registrare il dispositivo, scansiona il codice QR o effettua l'accesso su www.iqos.com/iluma e segui le istruzioni.

* L'IQOS app potrebbe non essere disponibile nel tuo Paese.



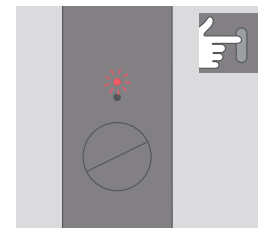
LUCE GIALLA LAMPEGGIANTE

La batteria è scarica e deve essere ricaricata.



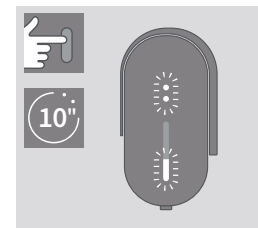
SE LE LUCI BIANCHE LAMPEGGIANO DUE VOLTE

IQOS ILUMA PRIME™ è al di fuori della temperatura di funzionamento (ovvero 0° C~40° C).



LUCE ROSSA LAMPEGGIANTE

Resettare il Caricatore Tascabile. Se la luce rossa continua a lampeggiare, contattare il Servizio Clienti.



PER RESETTARE

Inserire l'Holder nel Caricatore Tascabile e tenere premuto il pulsante per 10 secondi, poi rilasciarlo. Tutte le luci di stato si spegneranno e si riaccenderanno per confermare il reset del dispositivo.