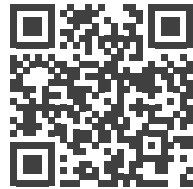


49.U628

Esplora il mondo di
VEEV inPRIME™

**Inquadra per registrare la tua
VEEV inPRIME™ e accedere
ai servizi a te dedicati.**

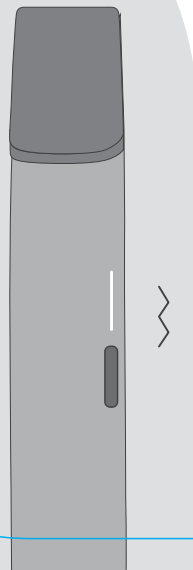


veev-vape.com/activate

Explore the world of
VEEV inPRIME™

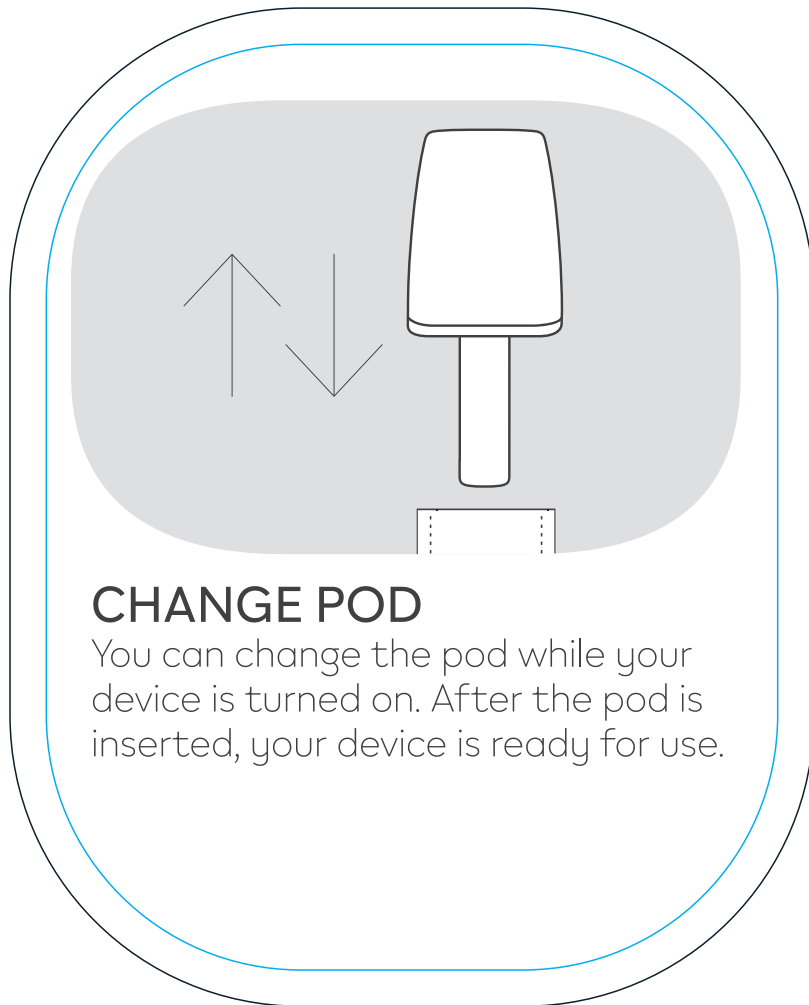
**Register here to activate our
unique variety of services and
programmes.**

VEEV inPRIME™ Electronic Cigarette User Guide



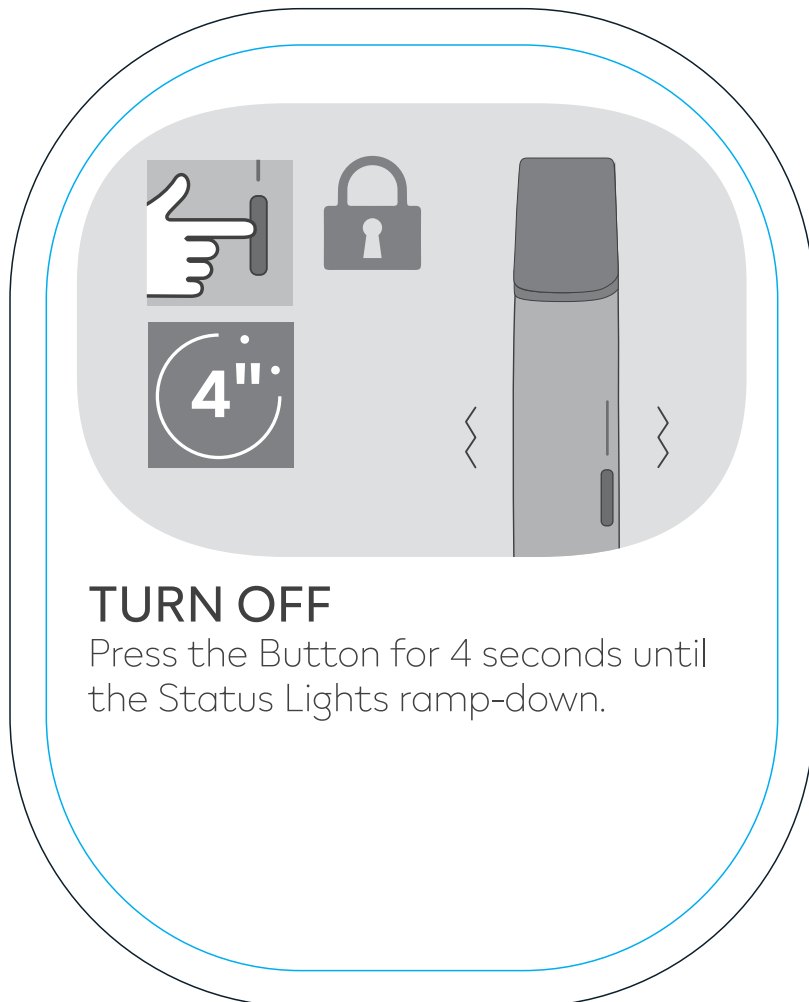
TURN ON

Press the
Button for 4
seconds until
the Status
Lights ramp-up
to the level of
battery charge.
Your device is
ready for use.



CHANGE POD

You can change the pod while your device is turned on. After the pod is inserted, your device is ready for use.



TURN OFF

Press the Button for 4 seconds until the Status Lights ramp-down.

RESPONSIVE DRAW™ & SENSORIAL FEEDBACK

The RESPONSIVE DRAW™ feature enhances the experience through a vibration while puffing and Sensorial Feedback uses vibrations to indicate different device statuses. To activate, change or deactivate vibration settings, press the Button while taking a puff. For details, visit veev-vape.com.



>75%
4 white
lights



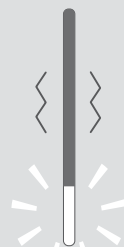
75-50%
3 white
lights



50-25%
2 white
lights



25%-1%
1 white
light

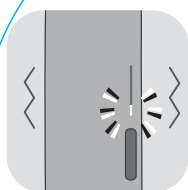


1%
**charging
required**

BATTERY LEVELS

Short press the Button, the Status Lights will turn on to indicate the battery level. When the battery is equal or lower than 1%, the lowest Status Light blinks **WHITE** 5 times. Your device should be recharged to continue using.

LOW LIQUID DETECTION



The lowest Status Light will blink **RED**, then **WHITE** 3 times. Ensure your device is used upright. If the warning persists, replace the pod to continue using.

ERROR NOTIFICATION



If your device is not working or the lowest Status Light blinks **RED** more than once, change the pod. If the error persists, RESET your device. For further support visit veev-vape.com.

